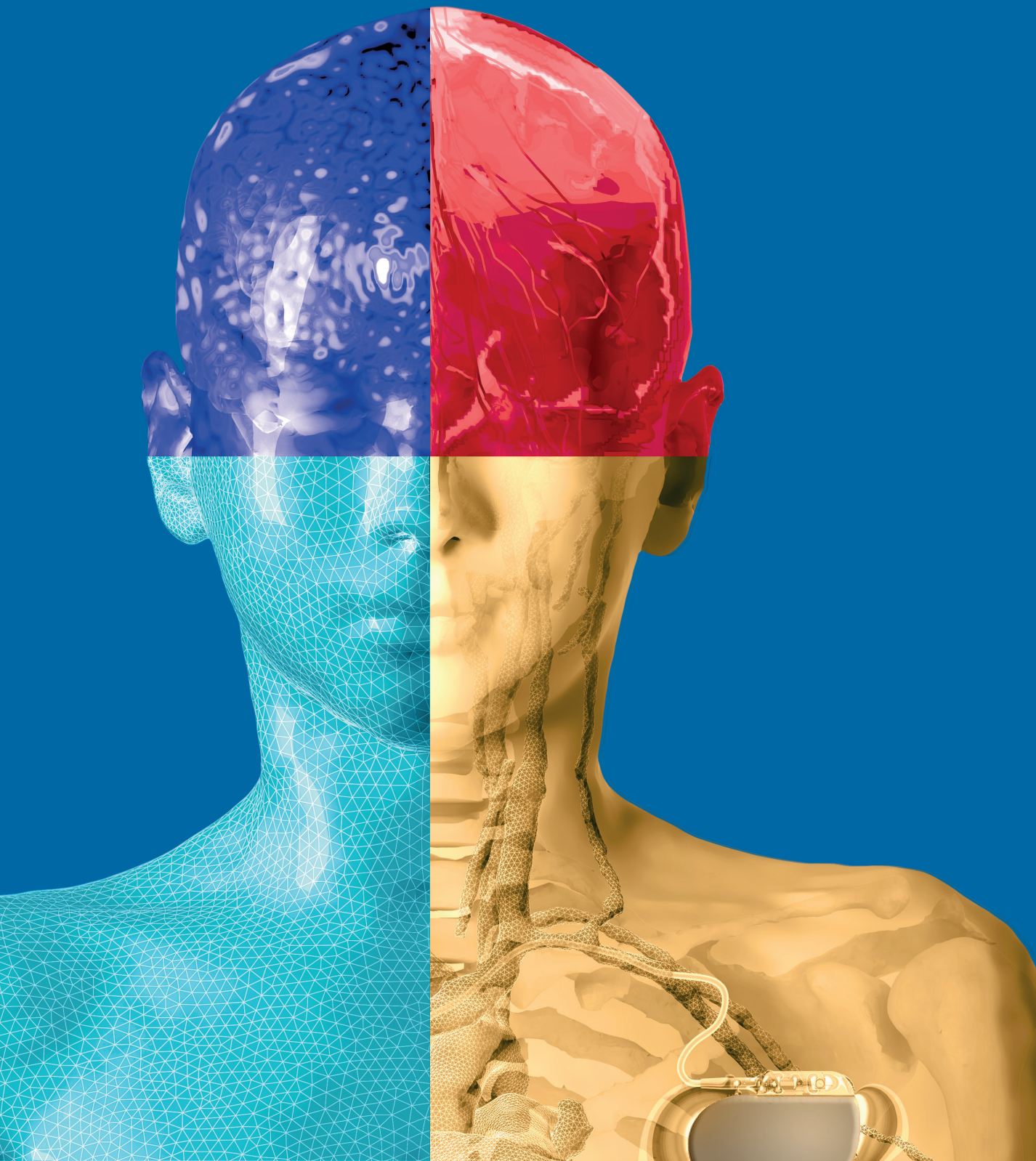


# Sim4Life Academic

*In Silico* We Trust – Created by Scientists  
for World-Class Research



# Advanced Computer Modeling and Simulations of Real-Life Experiments

Sim4Life is a unique multi-physics simulation platform that combines the most comprehensive and detailed computable human phantoms with powerful solvers and advanced tissue models. The platform is used worldwide by leaders in the biomedical industry. In addition, ZMT also offers special Sim4Life licenses to the academic world for both undergraduate and graduate students as well as for scientists in universities and research institutions. Each license paves the way for the user to simulate highly complex problems in science and engineering and to analyze biological real-world phenomena in a biologically validated anatomical environment.

## Sim4Life light

Sim4Life light has been created specifically for students to facilitate their understanding of computational modeling and simulations for various topics, ranging from wireless communication to medical applications. The license is available free-of-charge to students enrolled at registered universities and may be renewed annually up to one year after the student has left the university.

## Sim4Life University License

The Sim4Life University License is purchased with a "University Discount" and may be renewed yearly. Its use is restricted to non-commercial activities. Extended 3-year and permanent licenses are also available. Special packages with multiple licenses (10, 20, etc.) can be obtained upon request.

## Sim4Life Campus License

The Sim4Life Campus License provides lecturers with a robust tool for teaching electromagnetic field theory, antenna design, or any other subject where numerical modeling is key. Licenses are limited to 1-year but are provided free-of-charge to Sim4Life University License owners.

## Sim4Life for Science

This license is intended for use by scientists who need computational modeling solutions with a selected set of features tailored to their individual research needs. The license is limited to 1 year, annually renewable, restricted to use for research purposes at universities and academic institutes, and linked to a commitment to publish at least one paper per license in a peer-reviewed journal and/or conference proceeding.

Please contact [s4l-sales@zmt.swiss](mailto:s4l-sales@zmt.swiss) for further details.

## Sim4Life Academic

	Sim4Life light	University License	Campus License	Sim4Life for Science
<b>Application</b>	self-directed study	research	education/teaching	research
<b>Number of Objects</b>	unlimited	unlimited	unlimited	unlimited
<b>Grid Size</b>	max. 20 Mio cells	unlimited	unlimited	unlimited
<b>Solvers</b>	all	all	all	all
<b>GPU Acceleration</b>	no	CUDA, AXE	CUDA only	CUDA only
<b>ViP Human Models*</b>	Yoon-sun	all	upon request	Duke, Ella
<b>Python</b>	yes	yes	yes	yes
<b>3rd-Party Tools</b>	no	yes	no	upon request
<b>License Duration</b>	1-year (renewable)	1- or 3-year (renewable), or permanent	1-year (renewable)	1 year (renewable)
<b>Pricing</b>	free-of-charge	university discount	free-of-charge with university purchase of 1 or more licenses	free-of-charge (conditions apply)

\* [www.itis.swiss/virtual-population](http://www.itis.swiss/virtual-population)